

# KARIBAN

**REFERENCE :** K588

**SIZES :** S\_M\_L\_XL\_XXL\_3XL

**COMPOSITION :**

Main fabric : Linen / Cotton poplin 55/45 - 130 55%linen / 45% cotton

**WEIGHT :**

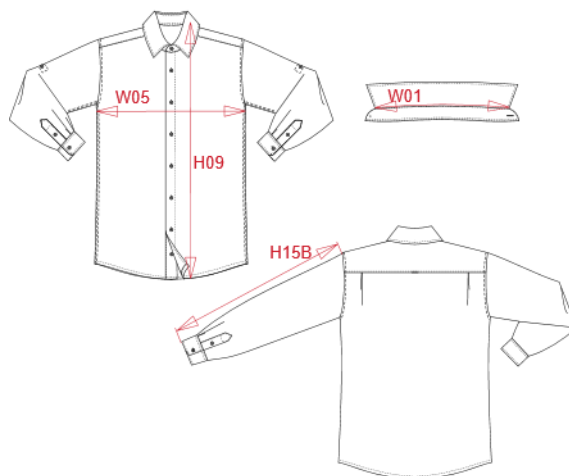
Main fabric : 130 gsm

**TECHNICAL DETAIL :**

Garment wash

**ARTICLE WEIGHT :**

255 gr/pc



DESCRIPTION
<b>Français :</b> Chemise lin et coton manches longues homme
<b>English :</b> Men's long sleeve linen and cotton shirt
<b>Nederlands :</b> Herenoverhemd van linnen met lange mouwen
<b>Deutsch :</b> Langarm-Leinenhemd für Herren
<b>Español :</b> Camisa de lino de manga larga para hombre
<b>Italiano :</b> Camicia uomo lino e cotone manica lunga
<b>Português :</b> Camisa de linho de homem de manga comprida

COLORS	PANTONE SERIGRAPHIE
White	White
Navy	433C

MEASUREMENT						
Description	S	M	L	XL	XXL	3XL
<b>W01 (M)</b> Longueur encolure / Neckline length	41,50	42,75	44	45,25	46,50	47,75
<b>H09 (M)</b> Hauteur totale devant / Front total height	74,50	76,50	78,50	80,50	82,50	84,50
<b>W05 (M)</b> 1/2 largeur poitrine / 1/2 chest width	51	54	57	60	63	66
<b>H15B (M)</b> Longueur manche avec poignet / Sleeve length with cuff	66	67	68	69	70	71

CARE LABEL

PACKING	
Box	20 pcs / box S => L:60cm W:40cm H:20cm GW:7.14kg NW:5.50kg M => L:60cm W:40cm H:20cm GW:7.36kg NW:5.72kg L => L:60cm W:40cm H:20cm GW:7.56kg NW:5.92kg XL => L:60cm W:40cm H:20cm GW:7.82kg NW:6.18kg XXL => L:60cm W:40cm H:20cm GW:8.10kg NW:6.46kg 3XL => L:60cm W:40cm H:20cm GW:8.44kg NW:6.80kg